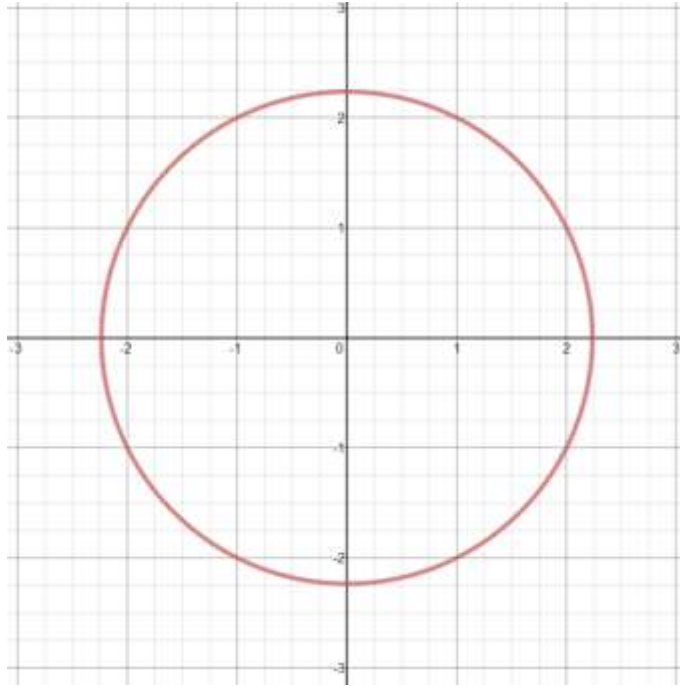


Simultaneous Equations with one Quadratic - graphically

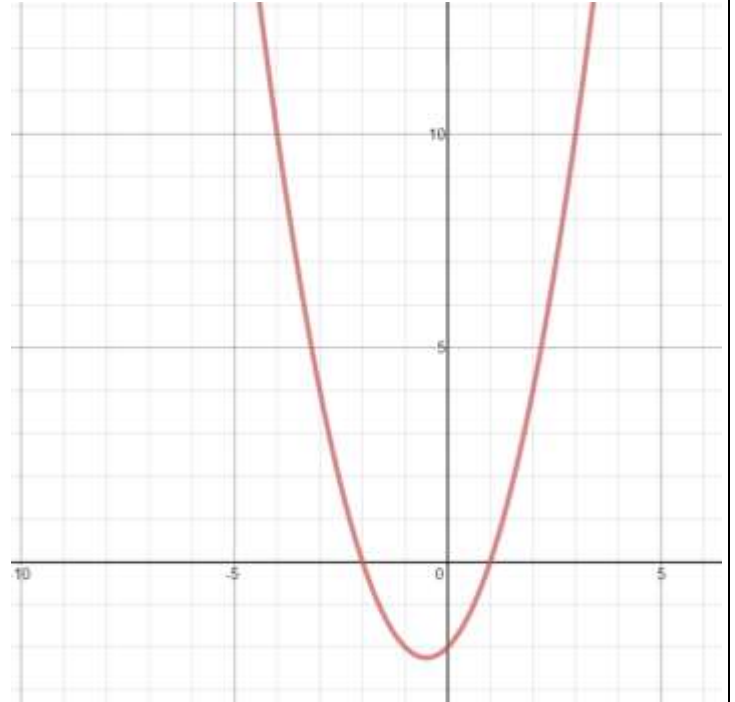
1. Here is the graph of $x^2 + y^2 = 5$



By drawing the line $x + y = 3$ find the solutions to the simultaneous equations

$$\begin{aligned}x^2 + y^2 &= 5 \\x + y &= 3\end{aligned}$$

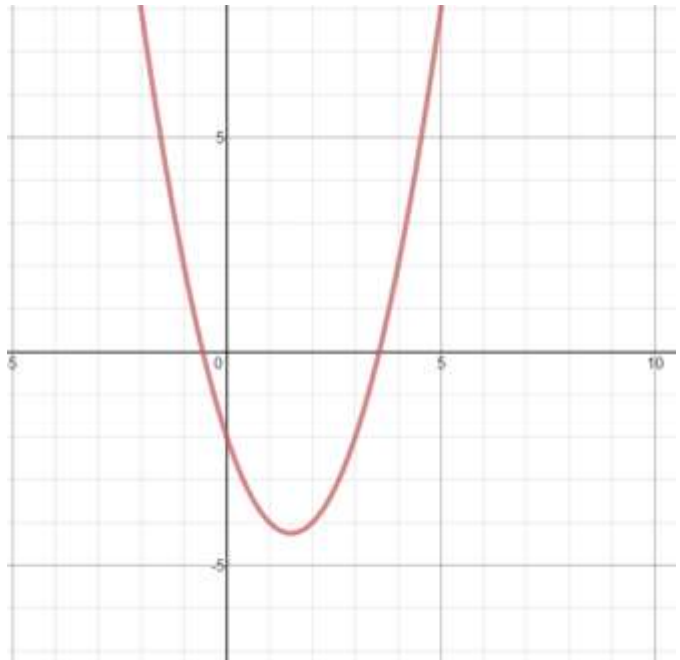
2. Here is the graph of $y = x^2 + x - 2$



By drawing the line $y = 2x + 4$, find the solutions to the simultaneous equations

$$\begin{aligned}y &= x^2 + x - 2 \\y &= 2x + 4\end{aligned}$$

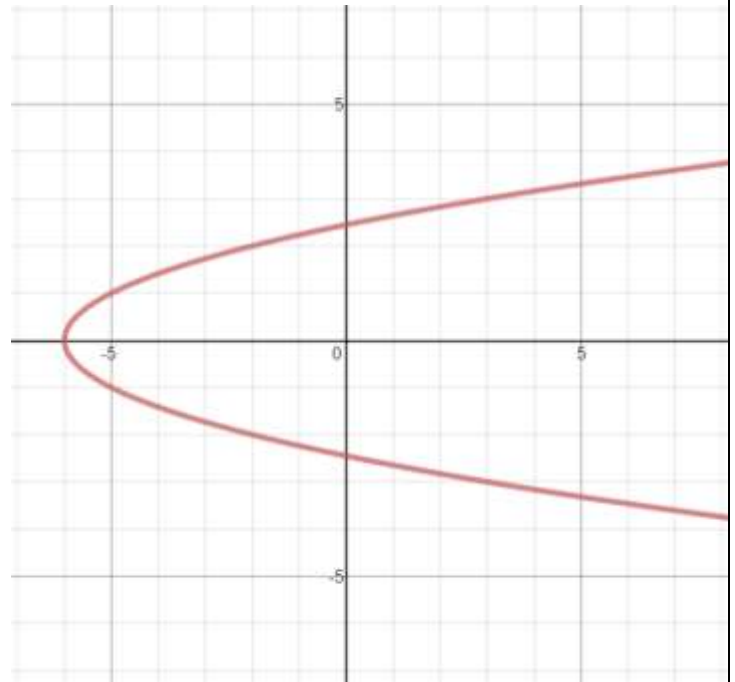
3. This is the graph of $y = x^2 - 3x - 2$



Use the graph to solve the simultaneous equations

$$\begin{aligned}y &= x^2 - 3x - 2 \\y &= 2x - 6\end{aligned}$$

4. This is the graph of $y^2 - x = 6$



Use the graph to solve the simultaneous equations

$$\begin{aligned}y^2 - x &= 6 \\y - x &= 0\end{aligned}$$